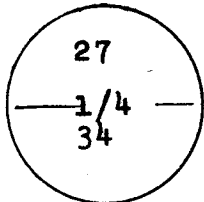


RECORDED **JAN 24 1983** AT 9:45 O'CLOCK A.M.
684856
 Reception No. JANET C. WHITEHEAD, Recorder

CERTIFIED LAND CORNER RECORDATION

T.14N., R70W.

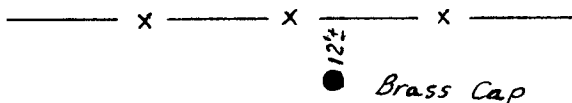


DESCRIPTION OF CORNER EVIDENCE FOUND, AND ORIGINAL RECORD (if known)
Found GLO Brass Cap as described in the 1934 Dependent Resurvey.
Location easily found by reference to USGS 7 1/2' Quad Map Hecla, Wyo.

DESCRIPTION OF MONUMENT AND ACCESSORIES ESTABLISHED TO PERPETUATE THE ORIGINAL LOCATION OF THIS CORNER:

NONE

SKETCH, WITH COURSE AND DISTANCE TO ADJACENT CORNER IF DETERMINED IN THIS SURVEY.
 (May Sketch or Paste Reproduction on Reverse Side.)



(See Map on Reverse Side)

January, 1983

I, Edward C. Fry certify that I have carefully performed or reviewed the work done on the diagrammed corner as reported on this recordation form and approve the same.

Edward C. Fry PE/LS 662
 Signature of Surveyor Registration No.

STATE OF WYOMING,
 Office of Clerk and Recorder,
 County of Taiwanee

This "corner record" was filed for record on the JAN 24 1983 day of 1983, 1983, was noted on the cross-index plat and is assigned page No. 684856, in book No. 684856.

Photographed.....
 Indexed.....
 Posted.....
 Assessor.....

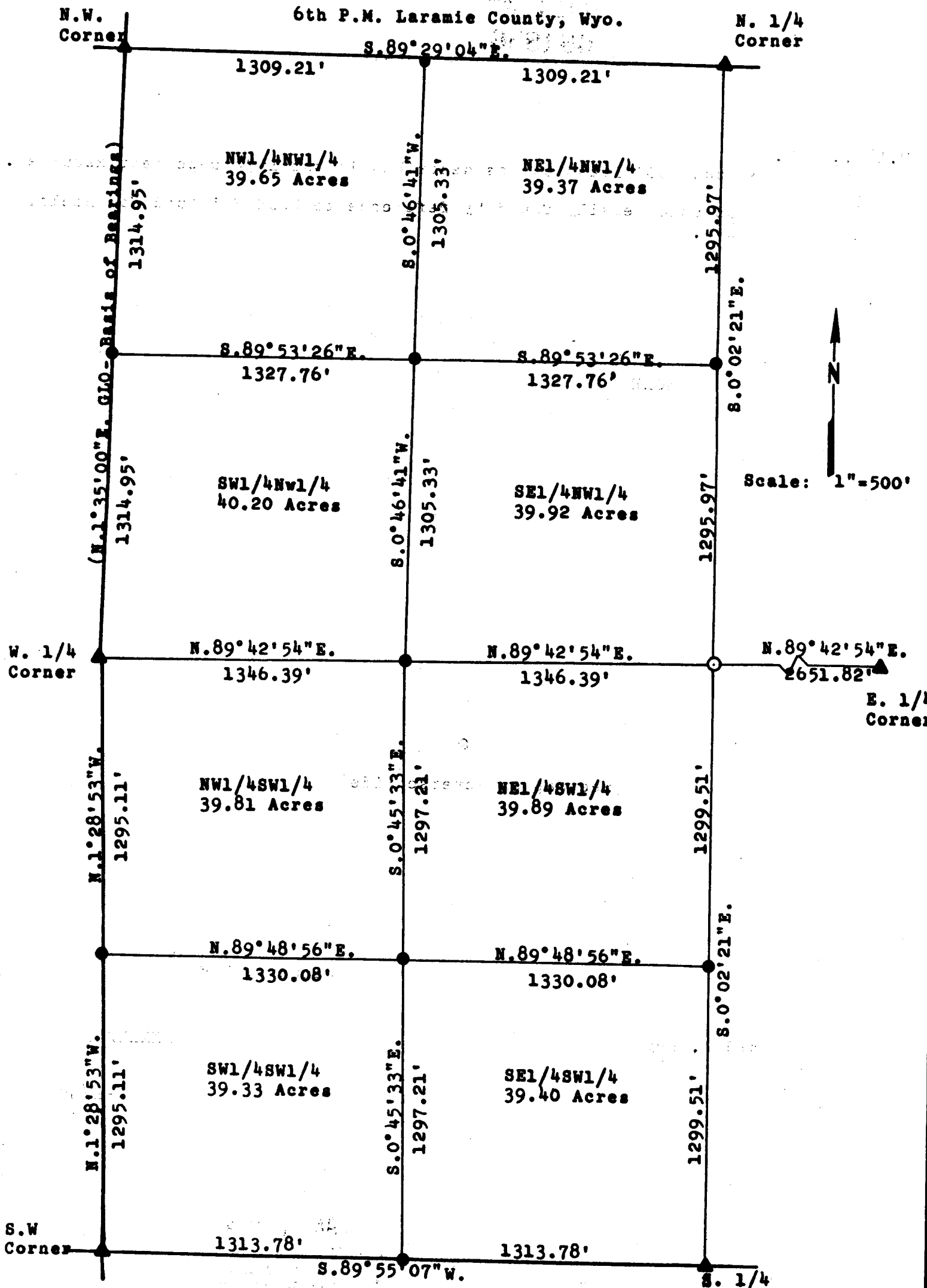
Janet C. Whitehead
 County Official
 Cross Index No. _____ T. _____ R. _____ Mer. _____
 _____ T. _____ R. _____ Mer. _____
 _____ T. _____ R. _____ Mer. _____
 _____ T. _____ R. _____ Mer. _____
 _____ T. _____ R. _____ Mer. _____
 _____ T. _____ R. _____ Mer. _____

684856

MAP OF SURVEY

W¹/₂ Section 34, T. 14 N., R. 70 W.

6th P.M. Laramie County, Wyo.



LEGEND

- ▲ GLO Brass Cap
 - 1 1/2" Iron Pipe with Aluminum I.D. Cap
 - 5/8" Rebar with Aluminum I.D. Cap
- By reference to survey made January 1983 by Edward C. Fry.

Edward C. Fry
 Wyo. Reg. P.E./L.S. # 662